








Comet 2U

Mono-Glass Module

645W-660W

 **Higher Power**
Lower LCOE

-  Partial Shading Optimisation
-  Better Temperature Coefficient
-  High Temperature Restriction
-  Micro-crack Resistance



Product
Warranty



Performance
Warranty



reddot winner 2023



Munich RE

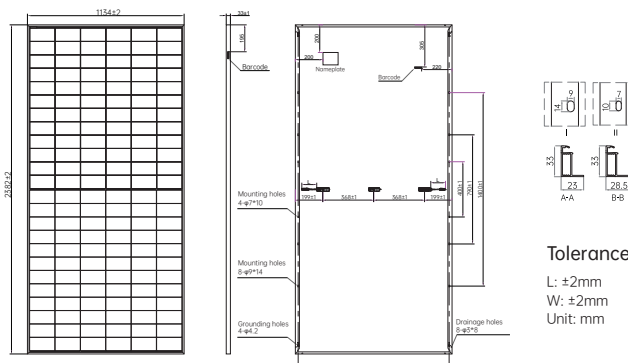
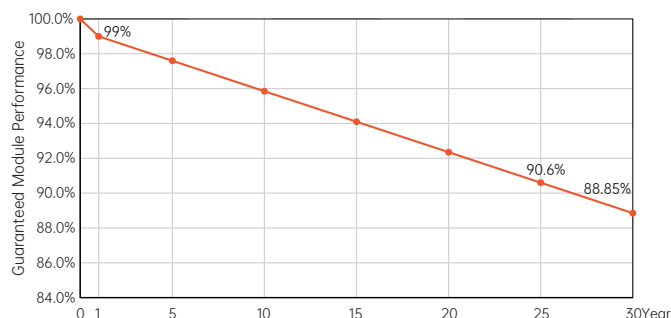


660W
Output

24.4%
Efficiency

≤1%
First-year Degradation

≤0.35%
Annual Degradation from Year 2-30



Electrical Characteristics (STC: AM1.5 1000W/m² 25°C NOCT: AM1.5 800W/m² 20°C 1m/s) Power Tolerance: 0~ + 3%

Module Type	AIKO-G645-MCH72Mw		AIKO-G650-MCH72Mw		AIKO-G655-MCH72Mw		AIKO-G660-MCH72Mw	
	STC	NOCT	STC	NOCT	STC	NOCT	STC	NOCT
P _{max} [W]	645	486	650	490	655	493	660	497
V _{oc} [V]	54.40	51.37	54.50	51.47	54.60	51.56	54.70	51.66
V _{mp} [V]	45.21	42.70	45.31	42.79	45.41	42.89	45.51	42.99
I _{sc} [A]	15.02	12.15	15.08	12.20	15.14	12.24	15.20	12.29
I _{mp} [A]	14.27	11.39	14.35	11.46	14.43	11.51	14.51	11.57
Module Efficiency	23.9%		24.0%		24.2%		24.4%	

Mechanical Specification

Cell Type	N-Type ABC
Glass	3.2 mm tempered glass
Frame	Anodized aluminum
Cable	4mm ² (IEC) 12AWG(UL) 350mm or Customized Length
No. of Cells	144(6*24)
Junction Box	IP68,3 bypass diodes
Connector	MC4 Compatible
Weight	31.5kg±3%
Dimension	2382*1134*33mm
Package Detail	33pcs per pallet / 132pcs per 20'GP / 660pcs per 40'HC

Temperature Ratings (STC)

Temperature Coefficient of I _{sc}	+ 0.05%/ °C
Temperature Coefficient of V _{oc}	- 0.22%/ °C
Temperature Coefficient of P _{max}	- 0.26%/ °C

Installation Guide

Operation Temperature	-40°C - +85°C
Maximum Series Fuse Rating	30A
Protection Class	Class II
V _{oc} and I _{sc} Tolerance	±3%
Maximum System Voltage	DC1500V
Maximum Static Loading	Front 5400Pa Back 2400Pa
Hail Test	25 mm diameter hail at 23 m/s
Fire Rating	IEC Class C

